



Beaufort County Public Works Stormwater Infrastructure Project Summary

Project Summary: Rhumblin Road

Activity: Routine/Preventive Maintenance

Narrative Description of Project:

Completion: Jul-14

Project improved 320 L.F. of drainage system. Grubbed, cleared and constructed 180 L.F. of workshelf. Reconstructed 320 L.F. of channel. Upsized (1) driveway pipe. Installed rip rap and hydroseeded for erosion control. Jetted (2) driveway pipes. Rework - Repaired washout.

2014-006 / Rhumblin Road	Labor Hours	Labor Cost	Equipment Cost	Material Cost	Contractor Cost	Indirect Labor	Total Cost
ADS / Administrative Support	2.0	\$66.36	\$7.24	\$9.60	\$0.00	\$48.94	\$132.14
AUDIT / Audit Project	1.0	\$20.46	\$0.00	\$0.00	\$0.00	\$13.23	\$33.69
DPINS / Driveway Pipe - Installed	40.0	\$903.10	\$274.76	\$410.23	\$0.00	\$567.50	\$2,155.59
DPJT / Driveway Pipe - Jetted	10.0	\$223.38	\$110.80	\$46.07	\$0.00	\$149.55	\$529.80
ESTP / Estimating Project	2.0	\$88.54	\$0.00	\$0.00	\$0.00	\$67.92	\$156.46
HAUL / Hauling	67.0	\$1,449.21	\$716.90	\$2,046.23	\$0.00	\$921.94	\$5,134.28
HYDR / Hydroseeding	46.0	\$1,037.74	\$141.90	\$246.88	\$0.00	\$651.57	\$2,078.09
LM / Loading Materials	46.0	\$1,082.14	\$256.72	\$53.21	\$0.00	\$676.88	\$2,068.95
ODCO / Outfall ditch - cleaned out	30.0	\$686.80	\$235.00	\$57.26	\$0.00	\$423.30	\$1,402.36
ODGRB / Outfall ditch - grubbed	53.0	\$1,238.27	\$300.16	\$105.29	\$0.00	\$773.54	\$2,417.26
ONJV / Onsite Job Visit	19.0	\$605.84	\$68.78	\$38.40	\$0.00	\$396.55	\$1,109.57
PI / Project Inspection	2.0	\$88.54	\$7.24	\$9.60	\$0.00	\$67.92	\$173.30
PROFS / Professional Services	0.0	\$0.00	\$0.00	\$0.00	\$300.00	\$0.00	\$300.00
PRRECON / Project Reconnaissance	5.0	\$155.88	\$7.24	\$9.60	\$0.00	\$103.63	\$276.35
RRI / Rip Rap - Installed	12.0	\$250.20	\$36.48	\$20.10	\$0.00	\$159.44	\$466.22
UTLOC / Utility locates	6.0	\$122.76	\$12.06	\$9.60	\$0.00	\$79.38	\$223.80
2014-006 / Rhumblin Road Sub Total	341.0	\$8,019.22	\$2,175.28	\$3,062.07	\$300.00	\$5,101.29	\$18,657.86
Grand Total	341.0	\$8,019.22	\$2,175.28	\$3,062.07	\$300.00	\$5,101.29	\$18,657.86

Before

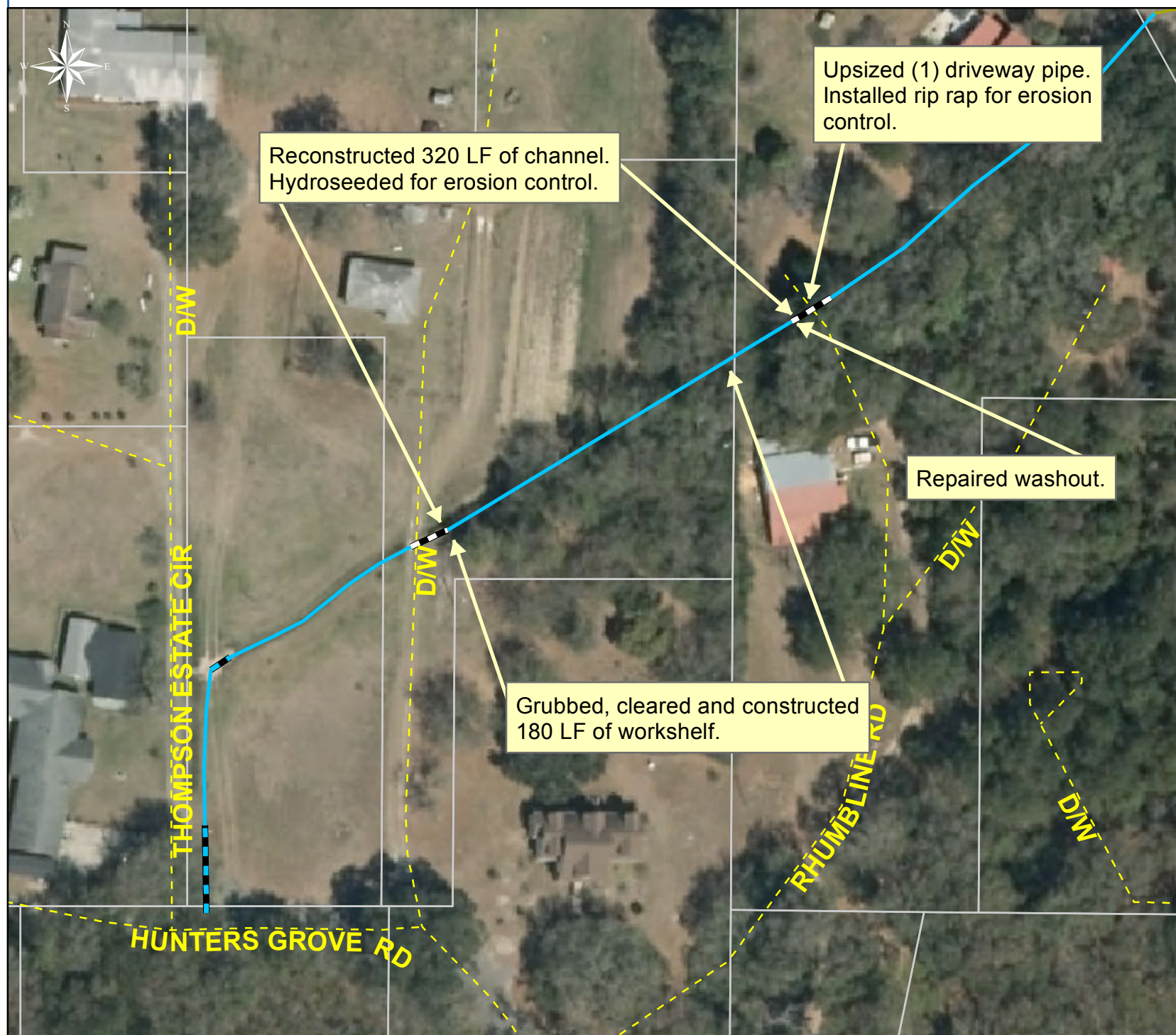


During



After





Project: Rhumbline Road Map 1

**Activity: Routine/
Preventive
Maintenance**















Project #:
2014-006

Township: St. Helena Island

**Completed:
July 2014**

Legend

TYPE

-  River
-  Creek/Stream
-  River/Creek/Marsh BANK
-  Channel (fka Outfall)
-  Channel Pipe
-  Lateral
-  Lateral Pipe
-  Roadside
-  Roadside Pipe
-  Road Pipe
-  Crossline Pipe
-  Driveway Pipe
-  Access Pipe
-  Bleeder Pipe

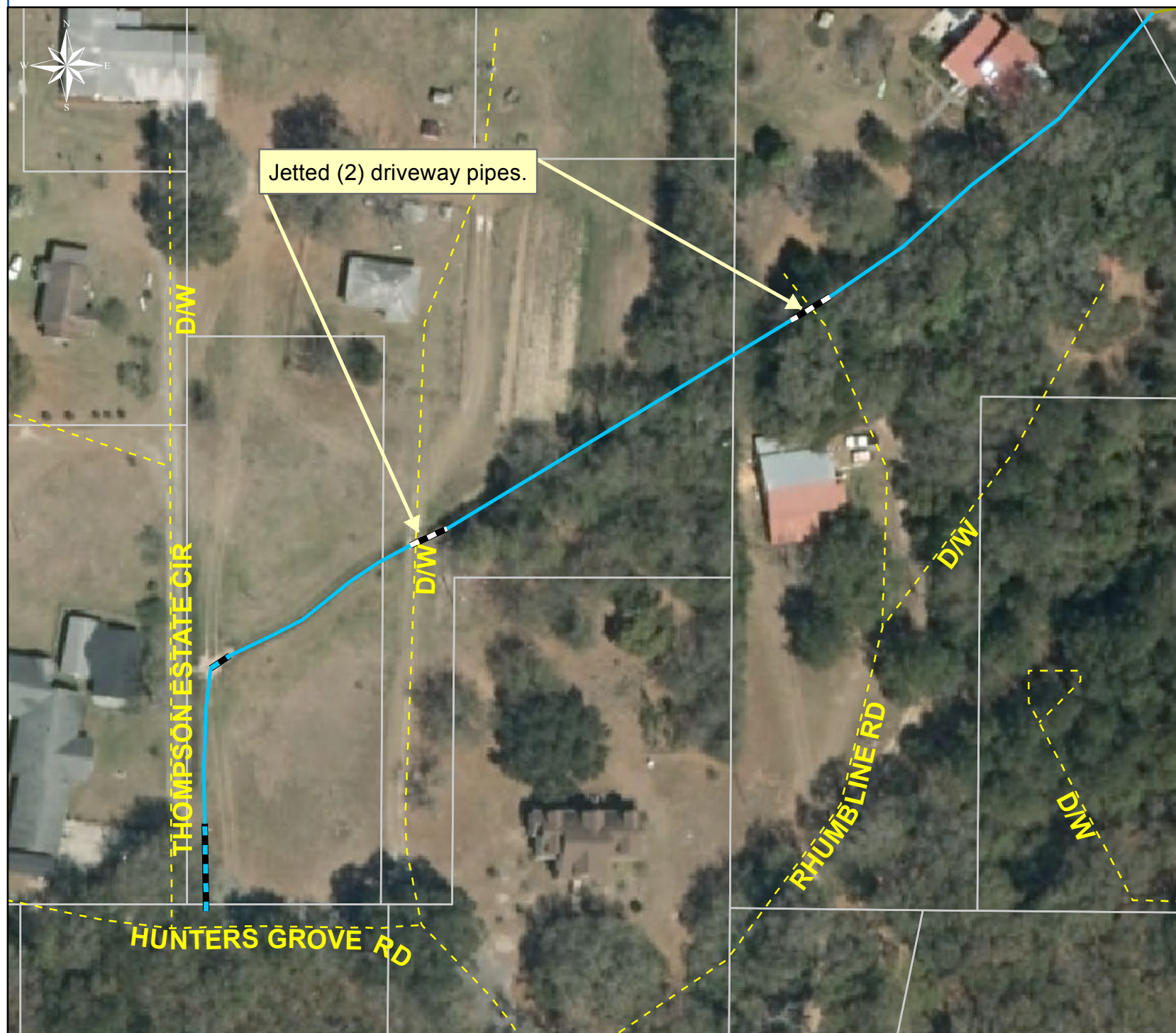
Project: Rhumbline Road Map 2

Activity: Vacuum Truck

Project #: 2014-006

Township: St. Helena Island

Completed: July 2014



Legend

TYPE

- River
- Creek/Stream
- River/Creek/Marsh BANK
- Channel (fka Outfall)
- Channel Pipe
- Lateral
- Lateral Pipe
- Roadside
- Roadside Pipe
- Road Pipe
- Crossline Pipe
- Driveway Pipe
- Access Pipe
- Bleeder Pipe

0 20 40 80 120 160 Feet

1 inch = 83 feet

Prepared By: BC Stormwater Management Utility

Date Print: 9/9/14

File:C:/sethdata/projects/projectmaps/Vac/Rhumbline 2014-006 Map2